



ZOLUX
GROUPE



THE ENTITIES WITHIN THE ZOLUX GROUP ARE NOW **MISSION-LED COMPANIES**

What is a mission-led company?

Mission-led companies (a new legal status as per the French Pacte Law of 22 May 2019) focus on solving social and environmental challenges facing the 21st century, at the core of their business activities.

The act of defining a mission in the company statutes indicates a strong commitment.

This act constitutes a formal commitment by directors and shareholders to deploy the resources necessary in order to pursue this mission. It involves all teams within the company, who take action and help carry out the mission.



WATCH THE VIDEO



OUR RAISON D'ETRE:

To create sustainable happiness
for pets and their families

The 3 foundations of our approach **HORIZON**



Good for
MY PET



Happy in
MY WORK



Better for
MY PLANET



OUR MISSION:

To make a difference. By coming up with the best ideas and designs for our pets.

By taking positive steps, each day and within our own capacity, to protect the planet and the world around us.

By looking to the future with boldness and optimism.

→ Our actions in practice

Eco-designed
products



Responsible
Purchasing Policy



Products developed with
veterinary surgeons



Involving pet parents
in the creation of our
products



Social
action



Quality of life in
the workplace



OUR MISSION COMMITTEE:

Comprising members from within and outside the company, our mission committee is responsible for monitoring and verifying compliance in terms of business management with respect to its mission.

This social body issues opinions which must be as objective and qualified as possible.

Furthermore, an independent third-party body is responsible for ensuring that our actions are consistent with the mission defined in our statutes, and regularly verifies the mission reports issued by the committee.



**Alex
Doisneau**
Technician
ZOLUX



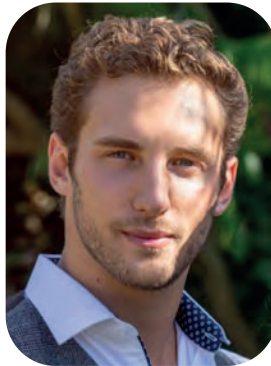
**Nicolas
Corvisier**
Sales Manager
SAINT BERNARD



**Soizic
Naizet**
Product Manager
LABORATOIRE
FRANCODEX



**Jean-Georges
Micol**
Consultant and
Administrator



**Thomas
Moreau**
Founder of YouCare
and the 1% For
Animals label



**Christophe
Robin**
Expert
Eco-design
and CSR

